

Unveil an exemplary riverside abode



RIVIERA
Waterfront Lifestyle

Welcome to life at,



RIVIERA

Waterfront Lifestyle

At Riviera, you'll find yourself at the juxtaposition of convenience and comfort. Riviera is a mixed-use development that houses the perfect balance of commercial, retail and residential spaces. Complete with a rooftop garden that boasts spectacular views of the Ulhas River and the Sahyadri Mountains, your home here is a peaceful, isolated haven, yet extremely well-connected to all the essentials and amenities one would require. Riviera is a place that you will be glad to call home.

- 1 & 2 BHK Apartments
- Ground Floor Retail Spaces
- Two Floor of Commercial Spaces
- Rooftop Garden
- River & Hill Facing Apartments





ARTIST'S IMPRESSION

A life of opulence redesigned.



STOCK IMAGES USED FOR REPRESENTATIONAL PURPOSE ONLY

Here, everything one could ever need to live a life that's futuristically advanced is already present. From high-end commercial spaces inside the project to electric charging stations for electric cars & bikes. The apartments come fitted with the highest of quality, and help you preserve electricity with a solar heating system

- Electric charging stations
- Modular kitchen
- High quality bathroom fittings

- Solar heating system
- Rooftop garden
- Video door phone

- CCTV surveillance

Location Map

Located at the centre,
between everything you need.



Scan for directions

Eastern Express Highway

Amrut Angan
Phase 2 by Mehta Group

Amrut Angan
Phase 1 by Mehta Group

Parsik Janata
Sahakar Bank

Parsik Hospital

Old Mumbai-Pune Road

Reliance Market

Kalwa Police Station

ICICI Bank
EuroKids Preschool

Evergreen Heights

RIVIERA
Waterfront Lifestyle

Main Road

Riverfront Development

Kalvan

Mumbai Bypass Road

Being well-connected to a multitude of essential services including schools, hospitals and public transportation is true comfort in a bustling city. At Riviera you can find yourself at a stone's throw away from these necessities, saving you ample time to focus on what's truly important.

- 10 mins from Kalwa station
- 5 mins away from the Highway

- Reputed schools and colleges in close proximity

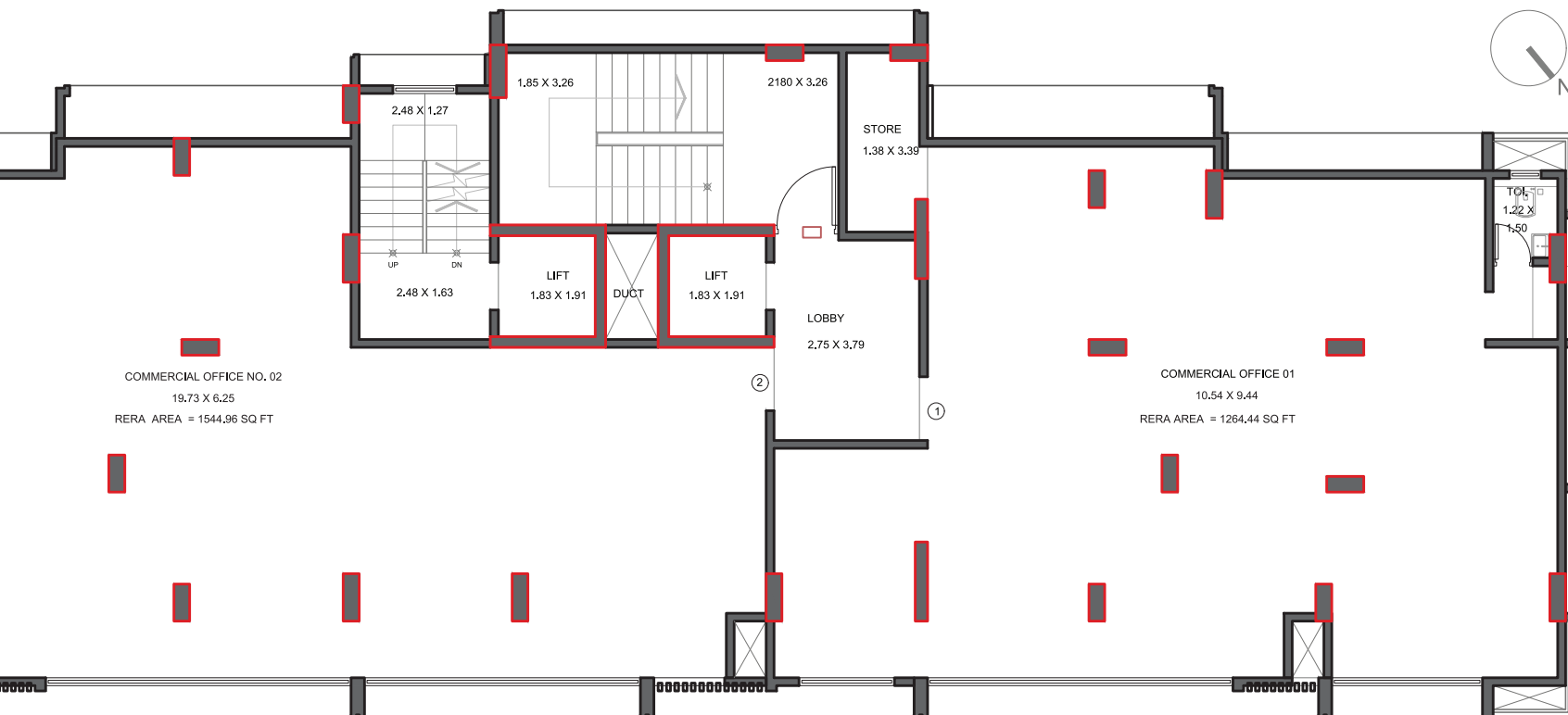
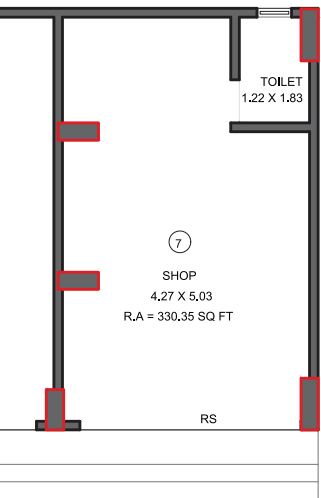


Actual View from Site



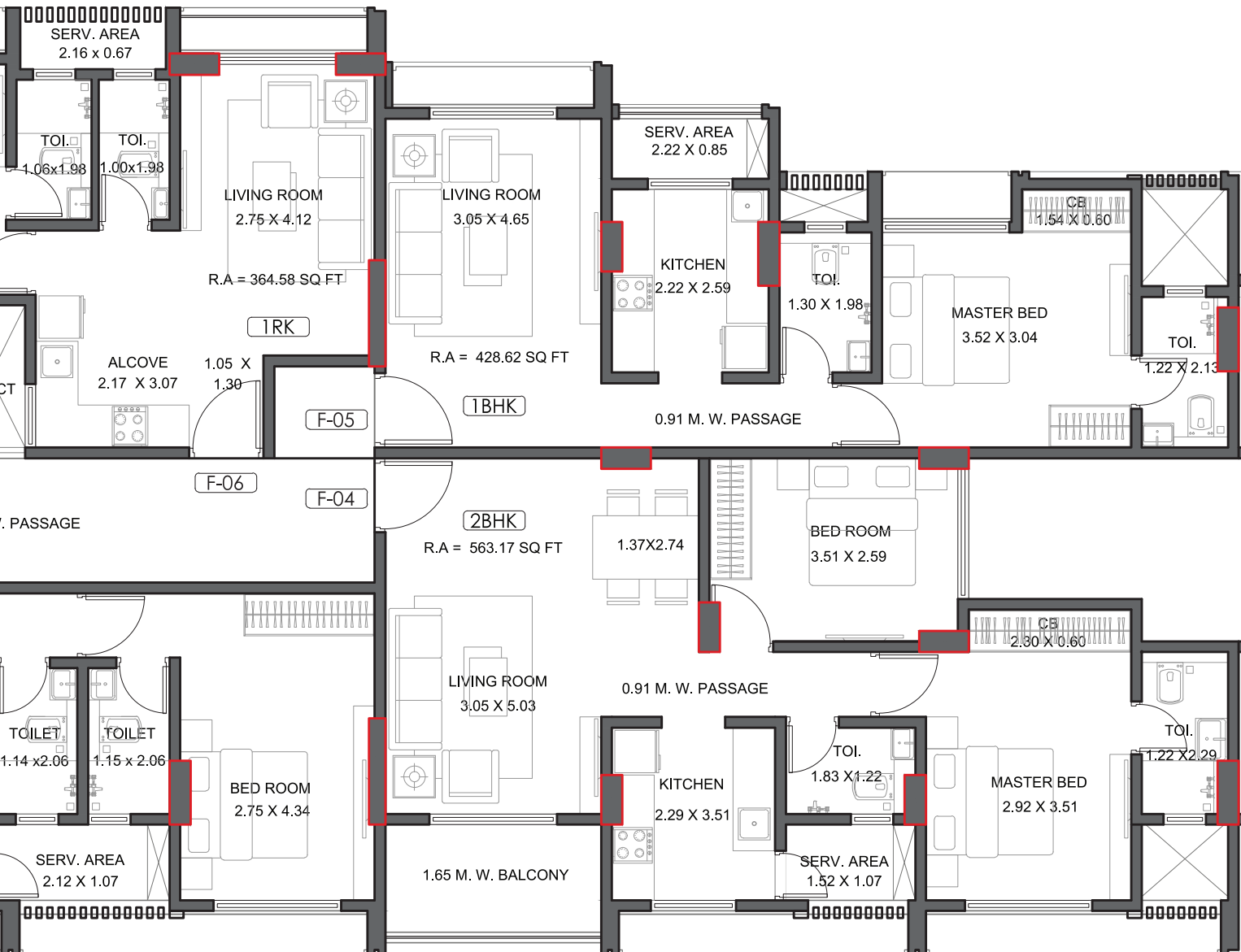


GROUND FLOOR



TYPICAL FLOOR PLAN





Made by the ones dedicated to
your well-being.



Mehta Group has been a vital part of Mumbai, Thane & Kalyan's growing landscape since 1978, and has successfully delivered projects across the city. For over 40 years, with innovation, we've grown into an ambitious conglomerate that makes a mark in their respective ventures. Over 10,000 families have chosen us to deliver their home, and we've lived up to our promise of timely delivery. We ensure that our quality is never compromised, and that makes us the entity we are today.

Corp Add.: 1st Floor, Jugalbaug Compound, Opp. S.T. Workshop,
L.B.S. Marg, Thane (W) 400 601. | Phone: +91 22 25437305 / 25437306 / 25437307
Email: info@mehtagroup.net.in | Web.: www.mehtagroup.net.in



The project Riviera is registered via MaharERA registration number:
P51700031214 and is available on the
website <https://maharera.mahaonline.gov.in> under registered projects.